

## Small Signal Schottky Diode



**SOT-323**

### Features

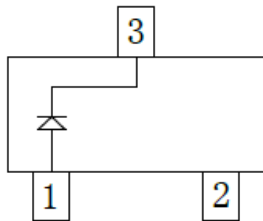
- Epoxy meets UL-94 V-0 flammability rating and halogen free
- Moisture Sensitivity Level 1
- Low Forward Voltage Schottky Rectifier
- $V_{RRM}$  70V
- $I_{FAV}$  70mA
- Part no. with suffix "Q" means AEC-Q101 qualified

### Applications

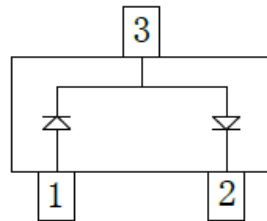
- For fast switching
- Automotive

### Mechanical Data

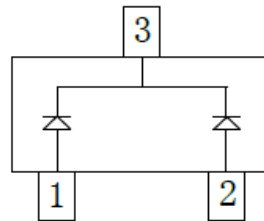
- **Case:** SOT-323
- **Terminals:** Tin plated leads, solderable per J-STD-002 and JESD22-B102



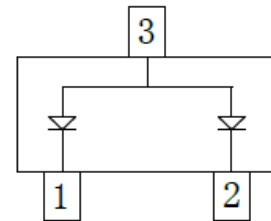
BAS70WTHQ



BAS70WT-04HQ



BAS70WT-05HQ



BAS70WT-06HQ

### ■ Maximum Ratings ( $T_a=25^\circ\text{C}$ Unless otherwise specified)

PARAMETER	SYMBOL	UNIT	CONDITIONS	VALUE
Peak Repetitive Reverse Voltage	$V_{RRM}$	V		70
Average Forward Current	$I_{FAV}$	mA		70
Non-Repetitive Peak Forward Surge Current	$I_{FSM}$	A	$t=8.3\text{ms}$	3
Power Dissipation	$P_D$	mW		250
Thermal Resistance Junction to Ambient	$R_{thJA}$	$^\circ\text{C}/\text{W}$		500
Junction Temperature	$T_j$	$^\circ\text{C}$		-55 to +150
Storage Temperature Range	$T_{stg}$	$^\circ\text{C}$		-55 to +150



## BAS70WTHQ THRU BAS70WT-06HQ

### ■ Electrical Characteristics (T<sub>a</sub>=25°C Unless otherwise specified)

PARAMETER	SYMBOL	UNIT	CONDITIONS	MIN	MAX
Forward Voltage	V <sub>F</sub>	V	I <sub>F</sub> =1mA		0.41
			I <sub>F</sub> =15mA		1
Reverse Current	I <sub>R</sub>	μA	V <sub>R</sub> =50V		0.2
Reverse Breakdown Voltage	V <sub>BR</sub>	V	I <sub>R</sub> =10μA	70	
Junction Capacitance	C <sub>J</sub>	pF	V <sub>R</sub> =0V, f =1MHz		4
Reverse Recovery Time	t <sub>rr</sub>	ns	I <sub>F</sub> =I <sub>R</sub> =10mA, I <sub>rr</sub> =1mA, R <sub>L</sub> =100Ω		5

### ■ Ordering Information (Example)

PREFERRED P/N	PACKING CODE	UNIT WEIGHT(g)	MINIMUM PACKAGE(pcs)	INNER BOX QUANTITY(pcs)	OUTER CARTON QUANTITY(pcs)	DELIVERY MODE
BAS70WTHQ BAS70WT-04HQ BAS70WT-05HQ BAS70WT-06HQ	F2	Approximate 0.006	3000	30000	120000	7" reel



# BAS70WTHQ THRU BAS70WT-06HQ

## ■ Characteristics (Typical)

Fig.1:  $P_D - T_A$

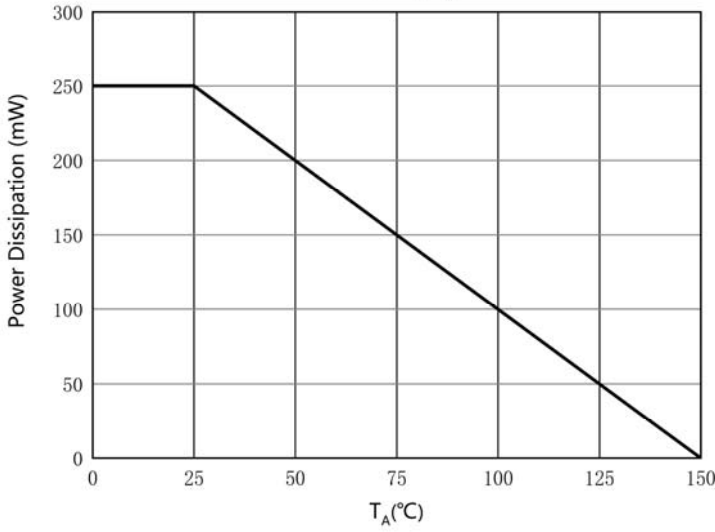


Fig.2: Capacitance Characteristics

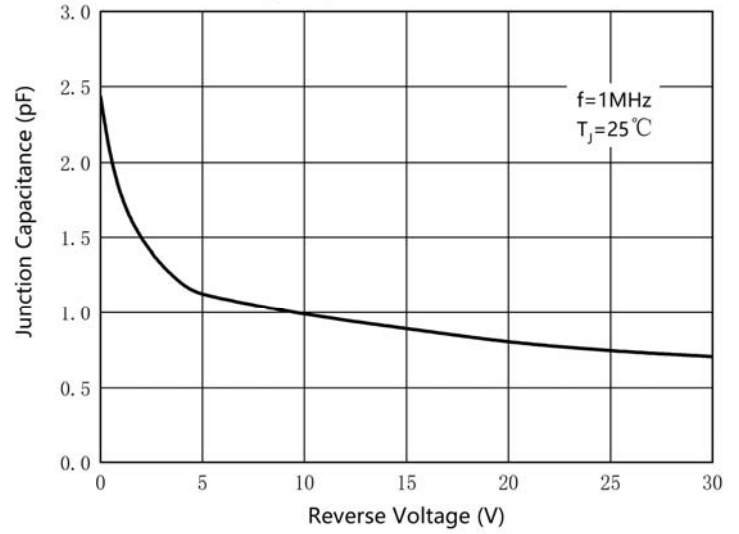


Fig.3: Forward Characteristics

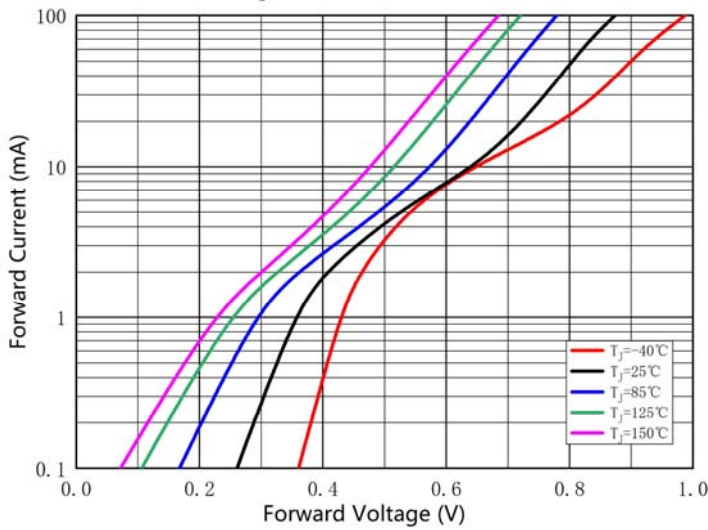
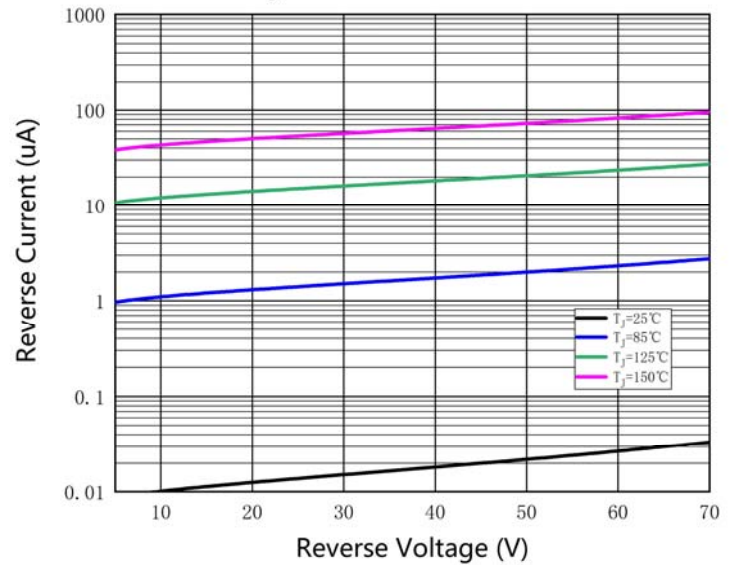


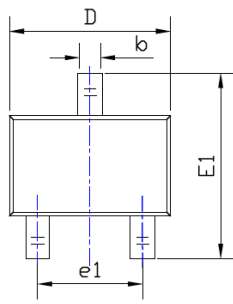
Fig.4: Reverse Characteristics



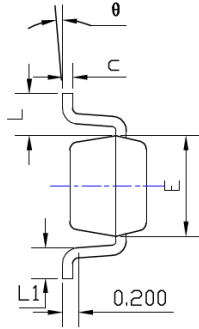


# BAS70WTHQ THRU BAS70WT-06HQ

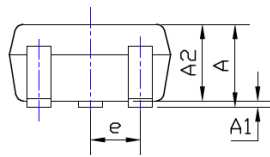
## ■ Outline Dimensions



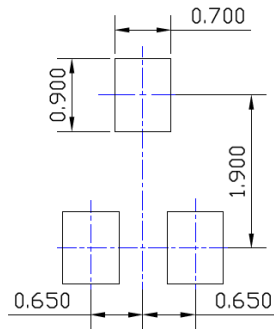
TOP VIEW



SIDE VIEW



SIDE VIEW



UNIT: mm

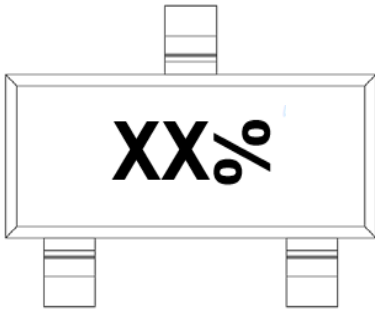
SUGGESTED SOLDER PAD LAYOUT

SYMBOL	DIMENSIONS			
	INCHES		Millimeter	
	MIN.	MAX.	MIN.	MAX.
A	0.035	0.043	0.900	1.100
A1	0.000	0.004	0.000	0.100
A2	0.035	0.039	0.900	1.000
b	0.006	0.016	0.150	0.400
c	0.004	0.010	0.100	0.250
D	0.071	0.087	1.800	2.200
E	0.045	0.053	1.150	1.350
E1	0.085	0.096	2.150	2.450
e	0.026TYP		0.650TYP	
e1	0.047	0.055	1.200	1.400
L	0.021REF		0.525REF	
L1	0.010	0.018	0.260	0.460
θ	0°	8°	0°	8°

**NOTE:**

- 1.PACKAGE BODY SIZES EXCLUDE MOLD FLASH AND GATE BURRS.
- 2.TOLERANCE 0.1mm UNLESS OTHERWISE SPECIFIED.
- 3.THE PAD LAYOUT IS FOR REFERENCE PURPOSES ONLY.

## ■ Marking Information



PN	Marking Code
BAS70WTHQ	73
BAS70WT-04HQ	74
BAS70WT-05HQ	75
BAS70WT-06HQ	76

**Note:**

1. All marking is at middle of the product body
2. All marking is in laser marking
3. XX is Marking Code
4. % is a date code, rotated 90° counterclockwise
5. Body color: Black

\*Date Code vary depending upon production date.



## BAS70WTHQ THRU BAS70WT-06HQ

---

### Disclaimer

The information presented in this document is for reference only. Yangzhou Yangjie Electronic Technology Co., Ltd. reserves the right to make changes without notice for the specification of the products displayed herein to improve reliability, function or design or otherwise.

The product listed herein is designed to be used with automotive electronics, are not designed for use in medical, life-saving, lifesustaining, or military, Yangjie or anyone on its behalf, assumes no responsibility or liability for any damages resulting from such improper use of sale.

This publication supersedes & replaces all information previously supplied. For additional information, please visit our website [http:// www.21yangjie.com](http://www.21yangjie.com) , or consult your nearest Yangjie's sales office for further assistance.